

Innovative.
Incognito.
Ingenious.



www.concealite.com

Concealite offers an innovative choice that conceals obtrusive fire alarm appliances. Our life safety products are available in a variety of custom finishes to blend in with interiors. We specialize in working with the design community to make our custom product lines fit your ideas and needs.

Conceal-Alarm Series

FA100 & FA900  

ETL listed to UL standards UL1971, UL1480, UL 464

Aesthetics

In architectural environments, fire notification appliances are obtrusive and interrupt the aesthetic beauty of interior designs. Concealite has applied their patented egress lighting technology to fire alarm equipment in order to maintain design integrity. Only when the fire system is activated do the units become visible, rotate 180 degrees, and begin operation. The result is a clean, almost invisible installation, that does not conflict with your interior.

Architectural Features

Standard white powder coat finish or units can be customized in the field using paint, wallpaper, or appliqué finishes.

- No minimum order for factory customized paint. (U.S. RAL# required)
- Compact, completely self-contained units.
- Interfaces with all fire alarm systems.
- Units fit in standard stud wall.
- Retrofit kits available for installation in existing walls or ceilings.
- Units furnished standard with Wheelock UL listed devices.
(See FAFX for ceiling devices.)
- Units are vandal resistant.
- Designed for wall installations, including gypsum board or plaster (with plaster trim option.)
(See FAFX for ceiling devices.)
- Units conform to NFPA 72 standards.
- ETL listed to UL standards UL1971, UL1480, UL 464



Historic Tennessee Theater, Knoxville TN

Conceal-Alarm interfaces with anyfire alarm system meeting local and National Life Safety Codes.



FA100
Horn/Strobes
Horns
Strobes
Speakers

FA900
Speaker/Strobes



Custom Finishes are Available to Match Interiors.

Conceal-Alarm Series



FIXTURE SCHEDULE	FIXTURE TYPE:	PROJECT NAME/REF:
APPROVAL:	CANDELA:	PROJECT LOCATION:

Installation

The assembly adjusts to any wall thickness (max 1 1/4", for greater thickness choose BEXT option) and is secured in place with concealed fasteners. The assembled unit including door, device and motor drive assembly are inserted into the recessed enclosure. Wire connections to the unit are made through conduit raceway on the recessed enclosure. For complete installation and operation instructions, please refer to the instruction sheet included with each shipment.

New Projects

For new projects, a single enclosure is mounted before the wall material is installed.

Retrofit/Remodeling Projects

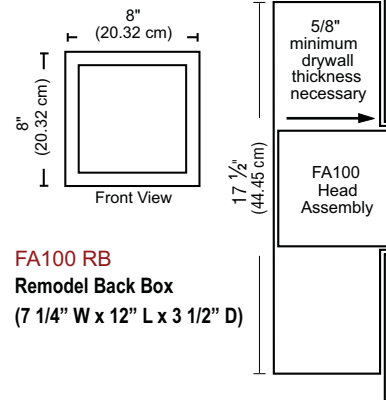
For retrofit/remodeling applications a retrofit back box (suffix RB) enclosure is available. See options and technical data section for details.

FA100 Horn/Strobe Combination, Horn, Strobe, Speaker



Note:
Unit requires finished opening of 7 1/4"H x 6 3/4"W.
Unit depth of 3 5/8" allows for installation into **walls only**. (No Ceiling installations. See FA-FX for ceiling applications).

FA100 Unit Dimensions

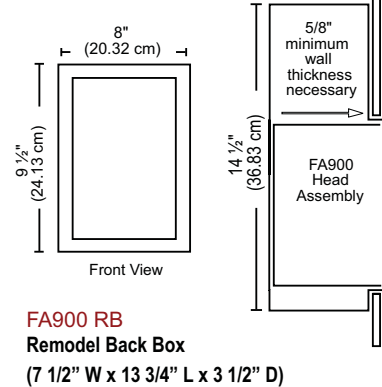


FA900 Speaker/Strobe



Note:
Unit requires finished opening of 8 7/8"H x 6 3/4"W.
Unit depth of 3 5/8" allows for installation into **walls only** (No ceiling installations. See FA-FX for ceiling applications).

FA900 Unit Dimensions



Product Specifications

The fire notification appliance shall be Concealite Conceal-Alarm Series. The unit shall be wall or ceiling mounted and will be controlled by the central fire system. Upon system activation, the door of the unit shall rotate 180 degrees and the fire notification appliance shall begin operation. Upon fire system shutdown, the door will rotate 180 degrees putting the appliance in the hidden or stored position.

The standard unit shall be a white powder coat finish, and can be custom finished by factory, or in the field, using paint, wallpaper or appliqué. The unit shall fit in a standard stud wall, and back boxes shall be available for any standard wall or ceiling material. The unit shall interface seamlessly with any fire system and shall not affect or interfere with any diagnostic routines of the fire system. The unit shall be in conformance with NFPA 72 (National Fire Alarm Code).

Limited Warranty

All Concealite equipment is guaranteed against defects in materials and workmanship by the manufacturer for a period of three years from date of shipment under normal operations and proper use. Correction of all defects shall be by replacement or repair (at our discretion) and shall constitute fulfillment of all manufacturer's obligations.

Ordering Information

FA100

MANUFACTURE	Device	Fixture	Device Type	Application	Part Number for Quote/Order
Wheelock	STR or STW (Wall Horn Strobe)	FA100	Strobe	Wall	FA100-W-STR or STW
Wheelock	HSR or HSW (Wall Audio Strobe)-Exceder	FA100	Horn Strobe	Wall	FA100-W-HSR or HSW
Wheelock	HNR or HNW (Wall Horn Only)-Exceder	FA100	Horn Only	Wall	FA100-W-HNR or HNW
Wheelock	E50R or E50W (Wall Speaker Strobe) Multi Candela	FA100	Speaker Only	Wall	FA100-W-E50R or E50W

FA900

MANUFACTURE	Device	Fixture	Device Type	Application	Part Number for Quote/Order
Wheelock	E50-24MCW-FR or E50-24MCW-FW	FA900	Speaker Strobe	Wall	FA900-W-E50R-MCW OR E50W
Wheelock	E50-24-MCWH-FR or E50-24-MCWH-FW	FA900	Speaker Strobe	Wall	FA900-W-E50R-MCWH OR E50W

Device Color
R=RED - W=WHITE

R=RED - W=WHITE

Innovative.
Incognito.
Ingenious.



www.concealite.com

Concealite offers an innovative choice that conceals obtrusive fire alarm appliances. Our life safety products are available in a variety of custom finishes to blend in with interiors. We specialize in working with the design community to make our custom product lines fit your ideas and needs.

Conceal-Alarm Series

FAFX



ETL listed to UL standards UL1971, UL1480, UL 464

Aesthetics

In architectural environments, fire notification appliances are obtrusive and interrupt the aesthetic beauty of interior designs. Concealite has applied their patented egress lighting technology to fire alarm equipment in order to maintain design integrity. Only when the fire system is activated do the units become visible, rotate 180 degrees, and begin operation. The result is a clean, almost invisible installation, that does not conflict with your interior.

Architectural Features

- Designed for ceiling installations, including gypsum board, plaster, or acoustical tile applications.
- White powder coat finish standard.
- Units can be customized in the field using paint, wallpaper, or appliqué finishes.
- No minimum order for factory customized paint. (U.S. RAL # required).
- Compact, completely self-contained units.
- Interfaces with all fire alarm systems.
Units furnished standard with Wheelock UL listed
- devices.
- Units are vandal resistant.
- Units conform to NFPA 72 standards.
- ETL listed to UL standards UL1971, UL1480, UL 464



Acoustic Ceiling Installation

Conceal-Alarm interfaces with any fire alarm system meeting local and National Life Safety Codes.

FX Shown Below with Ceiling Speaker / Strobe Fixture Installed



FAFX (Ceiling Only)

**Speaker/Strobes
Horn/Strobes
Horns
Strobes
Speakers**

Custom Finishes are Available to Match Interiors.

v.02.21.18.FA

Conceal-Alarm Series

FAFX



ETL listed to UL standards UL1971, UL1480, UL464

FIXTURE SCHEDULE

FIXTURE TYPE:

PROJECT NAME/REF:

APPROVAL:

CANDELA:

PROJECT LOCATION:

Installation

The assembly adjusts to any wall thickness (max 1 1/4", for greater thickness choose BEXT option) and is secured in place with concealed fasteners. The assembled unit including door, device and motor drive assembly are inserted into the recessed enclosure. Wire connections to the unit are made through conduit raceway on there cessed enclosure. For complete installation and operation instructions, please refer to the instruction sheet included with each shipment.

New Projects

For new projects, a single back box is mounted before the ceiling material is installed.

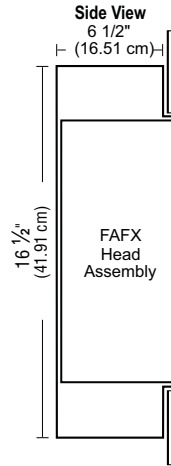
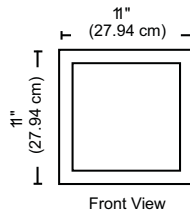
Retrofit/Remodeling Projects

For retrofit/remodeling applications a multi-section (suffix RB) enclosure is available. See options and technical data section for detail



Note:
Unit requires finished opening of 10 1/4" H x 10 1/4" W.
Unit depth of 6 1/2" allows for installation into ceilings.

FAFX Unit Dimensions



Typical "Visible" Installation



FAFX "Invisible" Installation

Product Specifications

The fire notification appliance shall be Concealite Conceal-Alarm Series. The unit shall be wall or ceiling mounted and will be controlled by the central fire system. Upon system activation, the door of the unit shall rotate 180 degrees and the fire notification appliance shall begin operation. Upon fire system shutdown, the door will rotate 180 degrees putting the appliance in the hidden or stored position.

The standard unit shall be a white powder coat finish, and can be custom finished by factory, or in the field, using paint, wallpaper or appliqué. The unit shall fit in a standard stud wall, and back boxes shall be available for any standard wall or ceiling material. The unit shall interface seamlessly with any fire system and shall not affect or interfere with any diagnostic routines of the fire system. The unit shall be in conformance with NFPA 72 (National Fire Alarm Code).

Limited Warranty

All Concealite equipment is guaranteed against defects in materials and workmanship by the manufacturer for a period of three years from date of shipment under normal operations and proper use. Correction of all defects shall be by replacement or repair (at our discretion) and shall constitute fulfillment of all manufacturer's obligations.

FAFX

Ordering Information

Device Color
R=RED - W=WHITE

MANUFACTURE	Device	Fixture	Device Type	Application	Part Number for Quote/Order
Wheelock	E60-24-MCC-FW or E60-24-MCC-FR	FAFX	Speaker Strobe	Ceiling	FAFX-C-E60-MCC-W or R
Wheelock	E60-24-MCCH-FW or E60-24-MCCH-FR	FAFX	Speaker Strobe	Ceiling	FAFX-C-E60-MCCH-W or R
Wheelock	E90W or E90R (Ceiling SPKR)	FAFX	Speaker Only	Ceiling	FAFX-C-E90W or E90R
Wheelock	HSWC or HSRC (Ceiling Horn Strobe) Exceder	FAFX	Horn Strobe	Ceiling	FAFX-C-HSWC or HSRC
Wheelock	STWC or STRC (Ceiling Strobe) Exceder	FAFX	Strobe	Ceiling	FAFX-C-STWC or STRC
Wheelock	HNWC OR HNRC (Ceiling Horn Strobe) Exceder	FAFX	Horn Strobe	Ceiling	FAFX-C-HNWC or HNRC

Conceal-Alarm Series

TECHNICAL DATA



ETL listed to UL standards UL1971, UL1480, UL464

Fixture Models

FA100

FA900

FAFX



Operation Cycle

When activated, the signaling appliance begins operation, the Conceal-Alarm's door rotates 180 degrees, and the micro-switch disengages the motor. The door is held open by a magnetic clutch system that remains operational until the fire alarm panel is deactivated. Deactivating the alarm mode branch circuit disengages the magnetic clutch and the door returns to a closed position.

Wiring Needs

Conceal-Alarm units use standard wiring practices, comparable to any alarm system. No additional wiring is necessary.

Appliance Application

Conceal-Alarm utilizes Wheelock UL Listed fire alarm appliances, i.e., speaker, speaker strobes, horns and horn/strobe combination units that operate with any fire system.

- All Conceal-Alarm units come fitted with a factory fitted wheelock UL listed appliance. Appliances cannot be installed in the field.

SPEAKER WATTAGE & VOLTAGE SETTINGS

Position	25V	70V
A	2 WATT	
B	1 WATT	
C	1/2 WATT	
D	1/4 WATT	2 WATT
E	1/8 WATT	1 WATT
F		1/2 WATT
G		1/4 WATT
H		1/8 WATT

Strobes

Strobes are available in wall and ceiling mount. Candela rating must be specified prior to manufacture. Due to concerns that strobe lights flashing at various times in the same area can trigger health problems, the Conceal-Alarm units are compatible with standard fire system synchronous modules, which cause the strobes to pulse at the same time.

Horns

The horn portion of the appliance can be set to provide either Continuous Horn or Code 3 Horn. The sound output can be set for High (HI) or Low (LO) dBA. Conceal-Alarm units with the horn feature are shipped with the default settings from the appliance manufacturer, unless requested otherwise.

Speakers

Speakers may operate with a public address system for use by the fire department, as well as automated messages during emergency situations.

Back Box Applications

The Conceal-Alarm can be installed in various back boxes depending on the specific requirements. The following back boxes are available:

- R1 Use in new construction applications. (FA100)
- R1-900 Use in standard new construction application. (FA900)
- RB Use in retrofit applications (FA100)
- RB-900 Use in retrofit applications (FA900)
- RFX Standard new construction (FX)
- RBFX Use in retrofit applications (FX)
- SM For surface mount installation (FA100 only)

Finish

The standard Conceal-Alarm trim and door are white powder coat. Please contact factory for custom finishes options.

Electrical Requirements

The table below will assist in planning voltage requirements for fire alarm systems:

Model	Voltage	Current Draw (mAmps) *
FA	16 VDC	600
FA	24 VDC	600
FA	33 VDC	600
FA	16 vFWR	600
FA	24 vFWR	600
FA	33 vFWR	600

*To determine total voltage requirements, select the proper current draw for the Conceal-Alarm from the table above and add the current draw requirements specified by the manufacturer of the appliance to be used within the Conceal-Alarm fixture.

Draw Requirements

Current draw requirements are available on the cut sheet for the device or on the web site of the manufacturer. Information can be viewed at:

Cooper Wheelock

www.cooperwheelock.com

Candela Settings

Wall: 15-30-75-110-135-185
FOR SSPK-HCD 135 OR 185
Ceiling: 15-30-75-95-115 or 177
FOR SSPK HCD 115 OR 177

Limited Warranty

All Concealite equipment is guaranteed against defects in materials and workmanship by the manufacturer for a period of three years from date of shipment under normal operations and proper use. Correction of all defects shall be by replacement or repair (at our discretion) and shall constitute fulfillment of all manufacturer's obligations.

Note: These specifications are subject to change